

Air Operated Double Diaphragm Pump



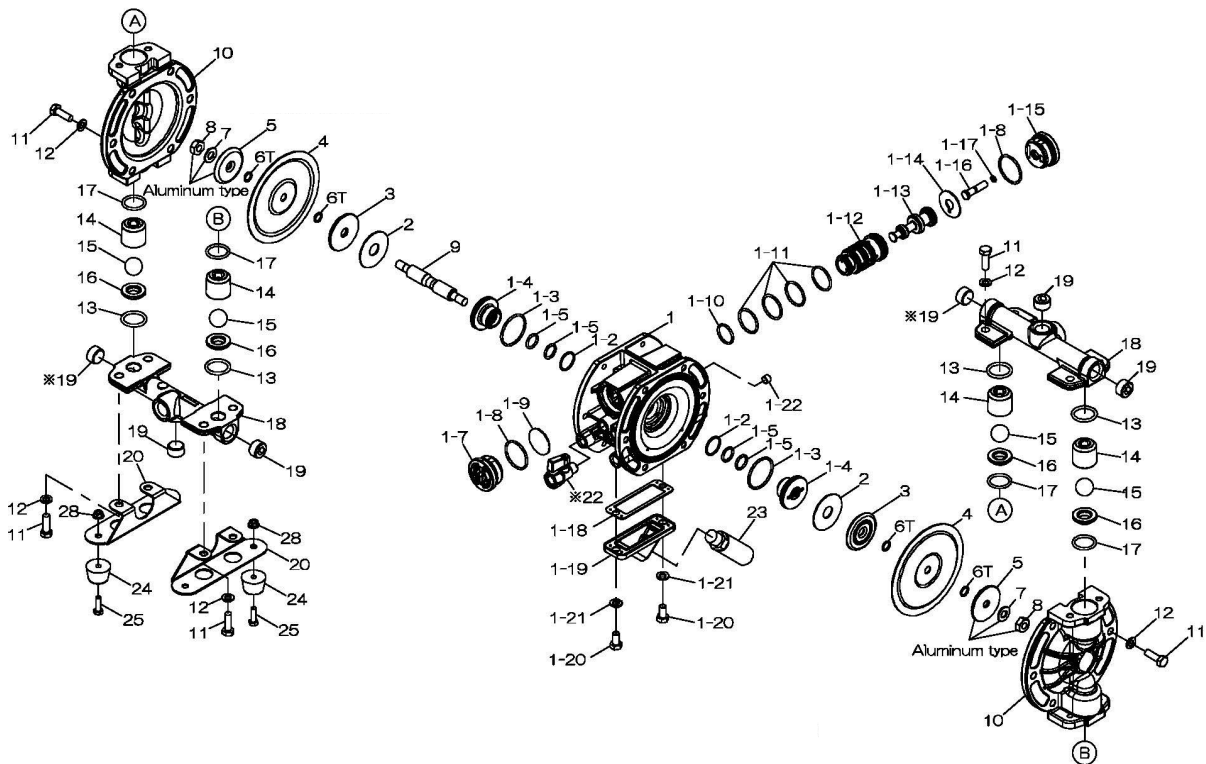
To Purchase:

- ☎ 800-990-7867
- ✉ sales@yamadapump.com
- 📍 Find My Rep

More Information:

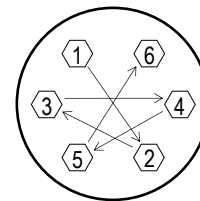
- ▶ YouTube: @yamadapump
- 🌐 yamadapump.com
- Data Sheets | CAD Drawings | Manuals Literature | BOM | Performance Curves*

Trial Program



Air Operated Double Diaphragm Pump

	G15AH11	G15AN11	G15AS11	G15AT11			
	854702	854700	854703	854701			
REF. No.	PART NO.	PART NO.	PART NO.	PART NO.	DESCRIPTION	QTY.	REORDER
1	805130	805130	805130	805130	BODY ASSY	1	
1-1	717082	717082	717082	717082	CENTER BODY	1	
1-2	684725	684725	684725	684725	O RING	2	
1-3	686733	686733	686733	686733	O RING	2	
1-4	773279	773279	773279	773279	GUIDE BUSHING	2	
1-5	640015	640015	640015	640015	O RING	4	
1-7	716917	716917	716917	716917	CAP A	1	
1-8	686734	686734	686734	686734	O RING	2	
1-9	773280	773280	773280	773280	CUSHION	1	
1-10	685276	685276	685276	685276	O RING	1	
1-11	686029	686029	686029	686029	O RING	4	
1-12	716950	716950	716950	716950	SLEEVE	1	
1-13	805131	805131	805131	805131	SPOOL ASSY	1	
1-14	773281	773281	773281	773281	CUSHION	1	
1-15	716918	716918	716918	716918	CAP B	1	
1-16	717035	717035	717035	717035	RESET BUTTON	1	
1-17	640002	640002	640002	640002	O RING	1	
1-18	773283	773283	773283	773283	GASKET	1	
1-19	717083	717083	717083	717083	COVER	1	
1-20	611145	611145	611145	611145	BOLT	2	
1-21	631916	631916	631916	631916	WAVE WASHER	2	
1-22	634360	634360	634360	634360	PLUG	1	
2	773278	773278	773278	773278	CUSHION	2	
3	716923	716923	716923	716923	CENTER DISK	2	
4	773316	773277	773315	773276	DIAPHRAGM	2	
5	716924	716924	716924	716924	CENTER DISK	2	
6T	-	-	-	643007	O RING	4	
7	681303	681303	681303	681303	CONED DISC SPRING	2	
8	683636	683636	683636	683636	NUT	2	
9	717100	717100	717100	717100	CENTER ROD	1	
10	716920	716920	716920	716920	OUT CHAMBER	2	
11	611149	611149	611149	611149	BOLT	20	
12	631916	631916	631916	631916	WAVE WASHER	20	
13	640025	640025	684114	643025	O RING	4	
14	717098	717098	717098	717098	BALL GUIDE	4	
15	773374	773422	773424	773423	BALL	4	
16	717099	717099	717099	717099	VALVE SEAT	4	
17	640130	640130	684113	643130	O RING	4	
18	717084	717084	717084	717084	MANIFOLD	2	
19	686789	686789	686789	686789	PLUG	6	
20	717186	717186	717186	717186	BASE	2	
*22	686826	686826	686826	686826	BALL VALVE	1	
23	682520	682520	682520	682520	MUFFLER	1	
24	771123	771123	771123	771123	RUBBER FOOT	4	
25	611101	611101	611101	611101	BOLT	4	
28	682817	682817	682817	682817	FLANGED NUT	4	
KIT	KG15-MH	KG15-MN	KG15-MS	KG15-MT	LIQUID END KIT		
KIT	KG15-AM-M				AIR MOTOR KIT		



Tightening torque:

- Center Rod 160 in-lbf {18 N-m}
- Out Chambers 105 in-lbf {12 N-m}
- Manifold Retainer Bolts or Nuts 105 in-lbf {12 N-m}

General Tools:

- Socket wrench - 10mm, 13mm, 17mm
- Hexagonal box wrenches - 5mm
- Open-end wrench - 10mm, 13mm, 17mm

Special Tools/Parts (sold separately):

- Cap & disc remover (771132)
- Sleeve remover (713148)
- Ball Valve (686826)

Miscellaneous:

- Assembly Oil - turbine oil class 1 (equivalent to ISO VG32 grade)
- Urea grease grade (NLGI) No. 2
- Thread locking agent (equivalent to LOCTITE® 222)

Customer Notes

Model #: _____

Description: _____

Serial #: _____

Date Installed: _____

Department Location: _____

Tag/Project: _____

*NO. 22 - Ball Valve sold separately